

JARGY CO., LTD.

Test Report

Model : CBL-USPD302MBS-3m

Ver : 1.0

Date : 2015/8/14

Camera Brand Name : Ximea

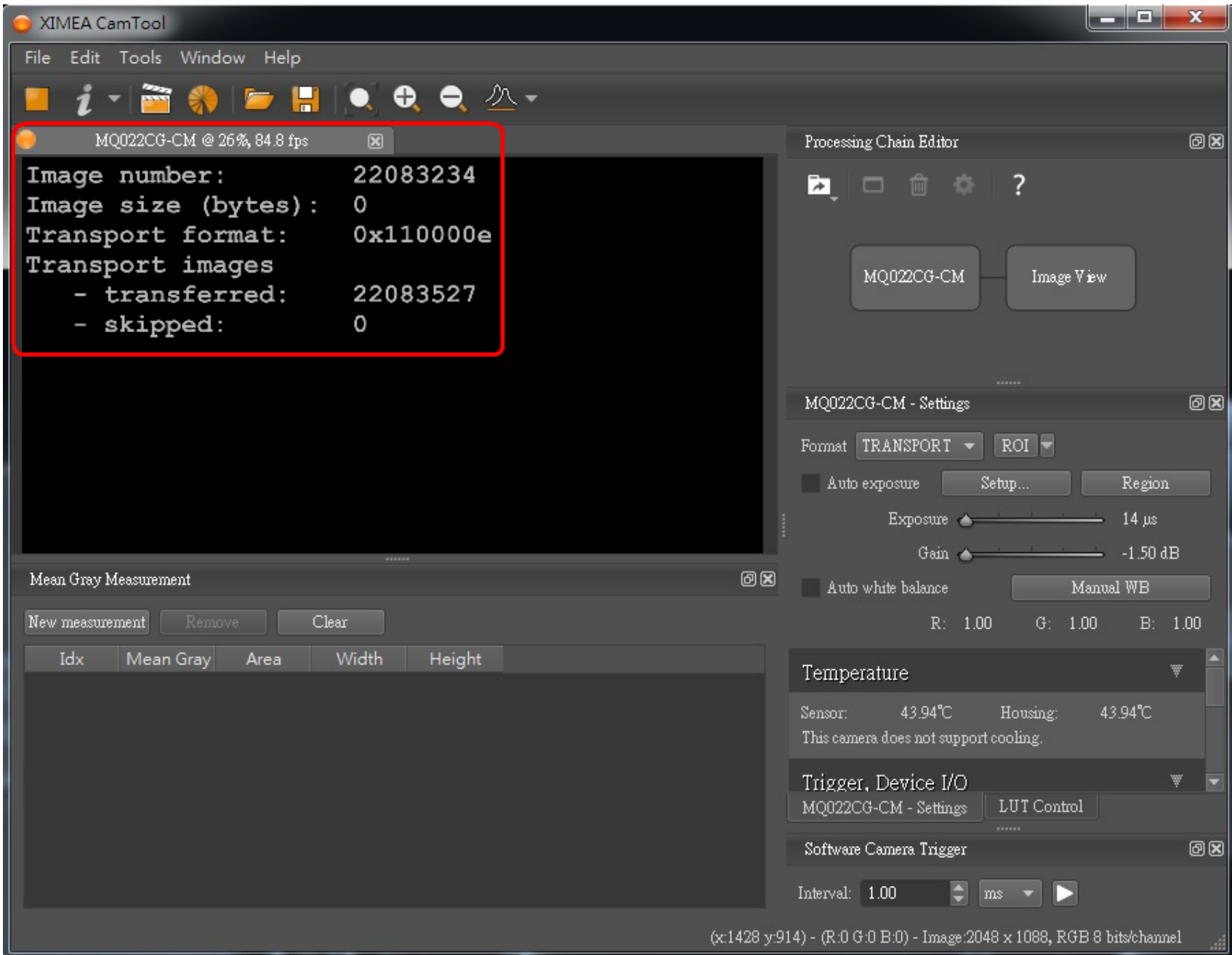
Test Platform

Type	PC		
Model	ASUS Z97-A		
OS	Windows 7 Home Premium 64Bit		
CPU	Intel Core i3-4130		
HDD	SATA III 500GB		
RAM	DDR3 4GB		
USB 3.0	PCH 6 Ports(Intel Z97 Native)		

Tested Camera : MQ022CG-CM

Tested time : 72h





JARGY CO., LTD.

Test Report

Model : CBL-USD302MBS-5m

Ver : 1.0

Date : 2015/10/22

Camera Brand Name : Ximea

Test Platform

Type	NB		
Model	MAC		
OS	Windows 8.1 Pro 64-bit		
CPU	Intel Core i7-3615QM		
HDD	SATA III SSD 128GB		
RAM	DDR3 8GB		
USB 3.0	PCH 2 Ports(Intel Z77 Native)		

Tested Camera : MQ022CG-CM

Tested time : 72h



XIMEA CamTool

File Edit Tools Window Help

MQ022CG-CM @ 68%, 84.6 fps

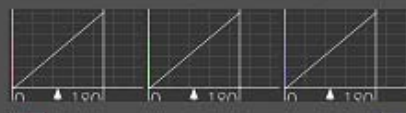
```
Image number:      22194829
Image size (bytes): 0
Transport format:   0x110000e
Transport images
- transferred:     22194830
- skipped:         0
```

Processing Chain Editor

MQ022C Image
G-CM View

LUT Control

Auto Min-Max Link RGB



All Red Green Blue

Software Camera Trigger

Interval: 0.00 ms

MQ022CG-CM - Settings

Format: TRANSPORT ROI

Auto exposure

Exposure: 39 μ s

Gain: -1.44 dB

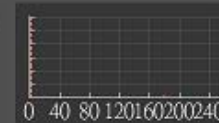
Auto white balance

R: 1.00 G: 1.07 B: 1.07

Mean Gray Measurement

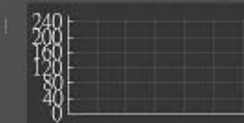
Idx	Chan	Gr	Area	Width	Height
-----	------	----	------	-------	--------

Histogram



- Red
- Green
- Blue
- Log
- Smooth
- Zoom X

Line Profile



(x:1995 y:133) - (R:0 G:0 B:0) - Image:2048 x 1088, RGB 8 bits/channel

JARGY CO., LTD.

Test Report

Model : CBL-USD302MBS-8m

Ver : 1.0

Date : 2015/10/30

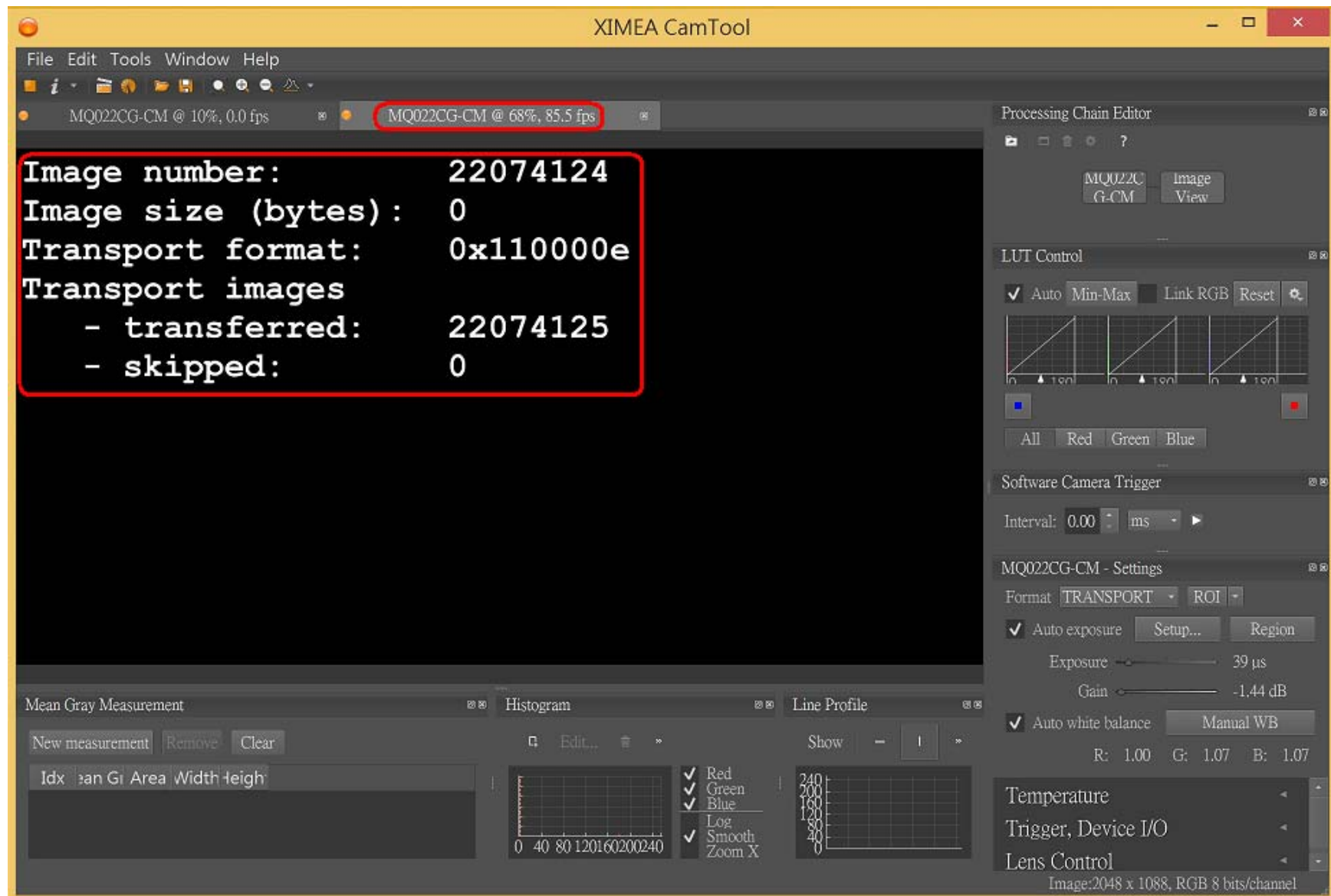
Camera Brand Name : Ximea

Test Platform

Type	NB		
Model	MAC		
OS	Windows 8.1 Pro 64-bit		
CPU	Intel Core i7-3615QM		
HDD	SATA III SSD 128GB		
RAM	DDR3 8GB		
USB 3.0	PCH 2 Ports(Intel Z77 Native)		

Tested Camera : MQ022CG-CM

Tested time : 72h



JARGY CO., LTD.

Test Report

Model : CBL-USD302MBS-10m

Ver : 1.0

Date : 2015/11/2

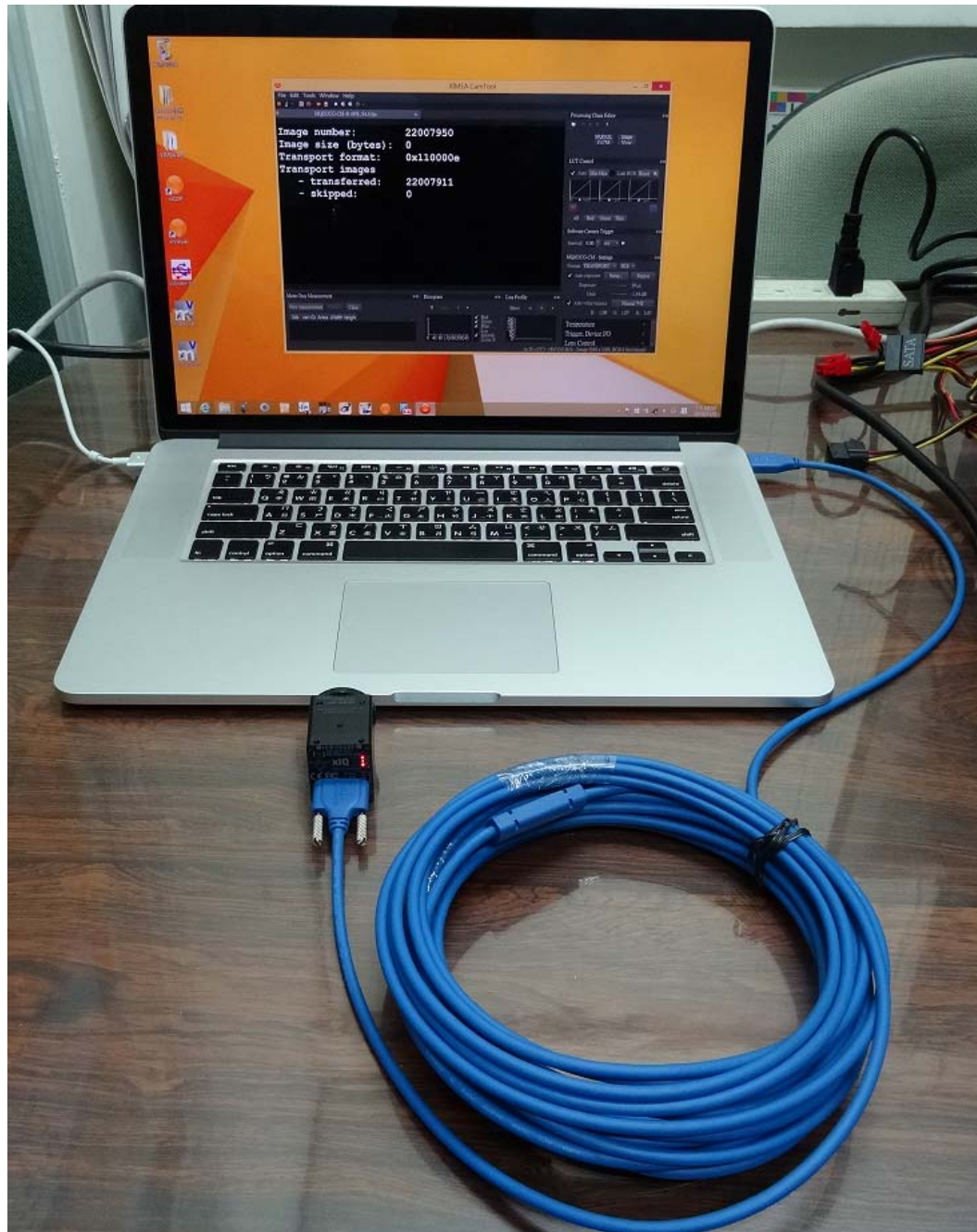
Camera Brand Name : Ximea

Test Platform

Type	NB		
Model	MAC		
OS	Windows 8.1 Pro 64-bit		
CPU	Intel Core i7-3615QM		
HDD	SATA III SSD 128GB		
RAM	DDR3 8GB		
USB 3.0	PCH 2 Ports(Intel Z77 Native)		

Tested Camera : MQ022CG-CM

Tested time : 72h



XIMEA CamTool

File Edit Tools Window Help

MQ022CG-CM @ 68%, 84.6 fps

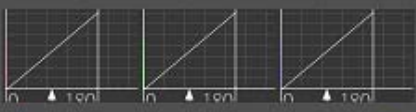
Image number: 22011268
Image size (bytes): 0
Transport format: 0x110000e
Transport images
- transferred: 22011229
- skipped: 0

Processing Chain Editor

MQ022CG-CM Image View

LUT Control

Auto Min-Max Link RGB



Software Camera Trigger

Interval: 0.00 ms

MQ022CG-CM - Settings

Format: TRANSPORT ROI

Auto exposure

Exposure: 39 μ s

Gain: -1.44 dB

Auto white balance

R: 1.00 G: 1.07 B: 1.07

Temperature



Trigger, Device I/O

Lens Control

Mean Gray Measurement Histogram Line Profile

New measurement Remove Clear

Idx	Area	Width	Height
-----	------	-------	--------



Red
Green
Blue
Log
Smooth
Zoom X

240
200
160
120
80
40
0

(x:28 y:337) - (R:0 G:0 B:0) - Image:2048 x 1088, RGB 8 bits/channel

JARGY CO., LTD.

Test Report

Model : CBL-USD302MBS-12m

Ver : 1.0

Date : 2015/11/9

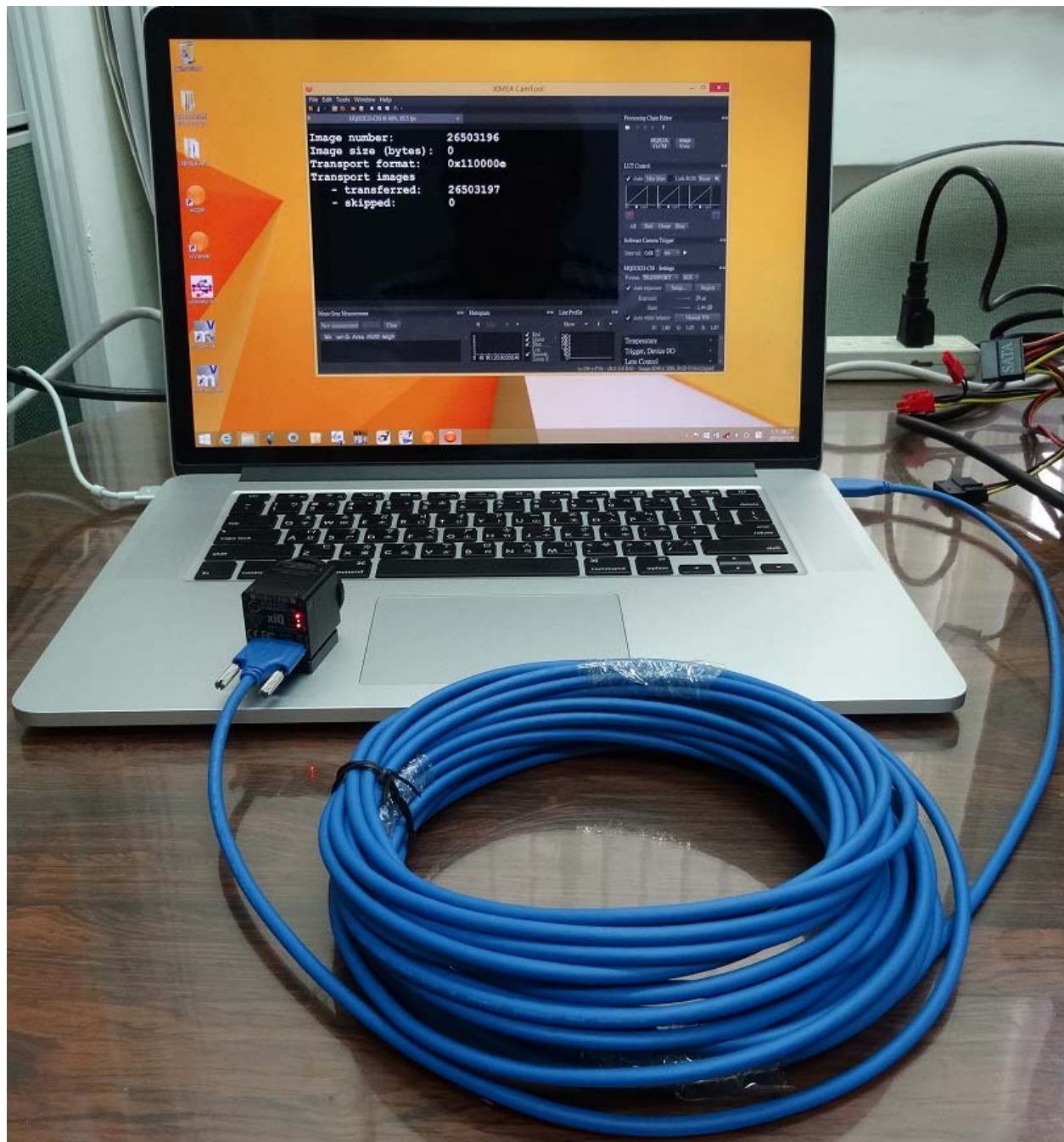
Camera Brand Name : Ximea

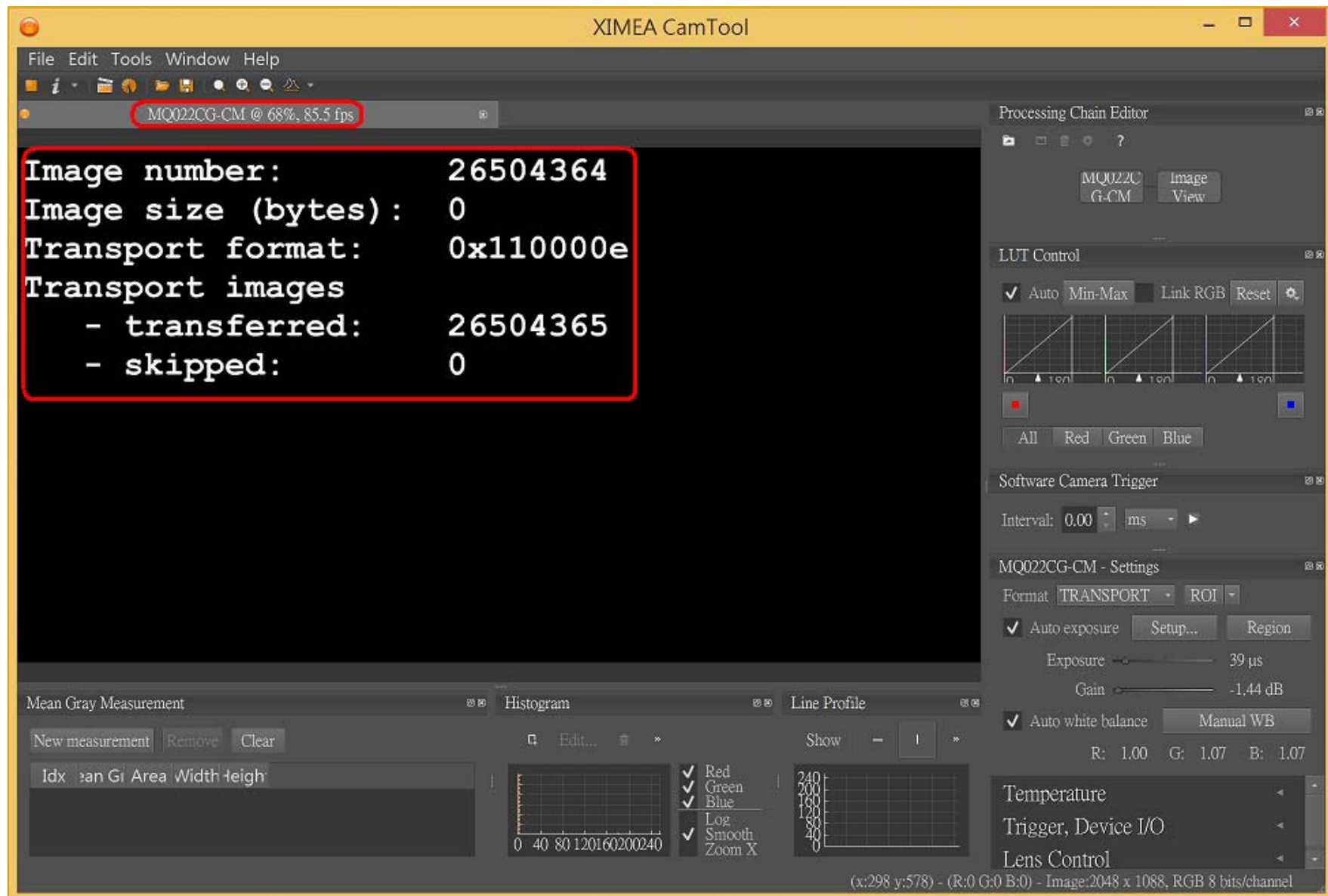
Test Platform

Type	NB		
Model	MAC		
OS	Windows 8.1 Pro 64-bit		
CPU	Intel Core i7-3615QM		
HDD	SATA III SSD 128GB		
RAM	DDR3 8GB		
USB 3.0	PCH 2 Ports(Intel Z77 Native)		

Tested Camera : MQ022CG-CM

Tested time : 86h





JARGY CO., LTD.

Test Report

Model : CBL-USD302MBS-15m

Ver : 1.0

Date : 2015/11/16

Camera Brand Name : Ximea

Test Platform

Type	PC		
Model	ASUS Z170		
OS	Windows 7 Home Premium 64Bit		
CPU	Intel Core i5-6400		
HDD	SATA III 1TB		
RAM	DDR4 4GB		
USB 3.0	PCH 6 Ports(Intel Z170 Native)		

Tested Camera : MQ022CG-CM

Tested time : 96h

