

# JARGY CO., LTD.

## Test Report

Model : CBL-USPD302MBS-3m  
Camera Brand Name : Matrix Vision

Ver : 1.0

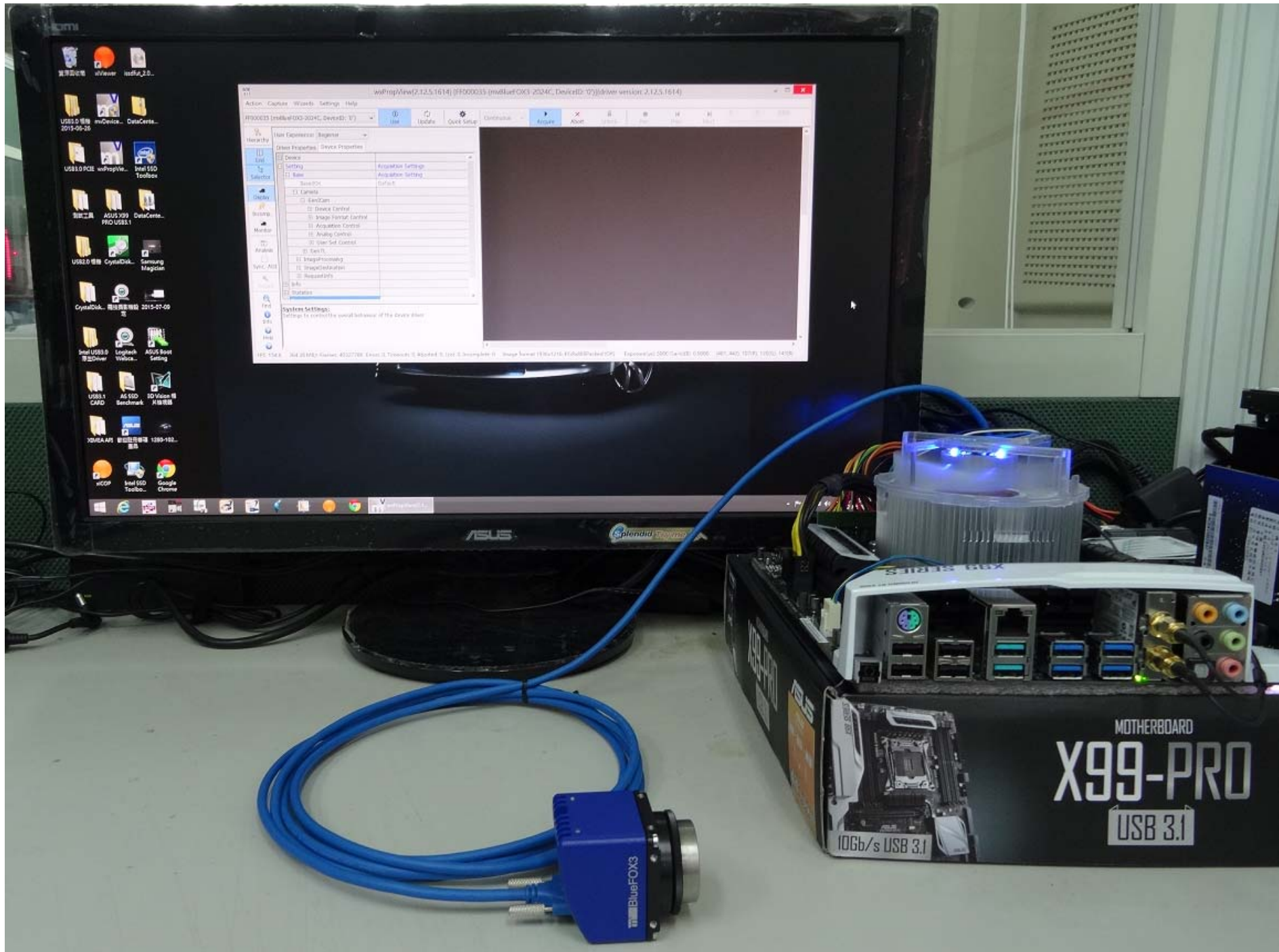
Date : 2015/8/14

### Test Platform

Type	PC		
Model	ASUS X99-PRO/USB3.1		
OS	Windows 8.1 Pro 64-bit		
CPU	Intel Haswell-E i7-5960X		
HDD	SATA III 500GB		
RAM	DDR4 8GB		
USB 3.0	PCH 4 Ports(Intel X99 Native)		

Tested Camera : mvBlueFOX3-2024C

Tested time : 72h



wxPropView(2.12.5.1614) [FF000035 (mvBlueFOX3-2024C, DeviceID: '0')] (driver version: 2.12.5.1614)

Action Capture Wizards Settings Help

FF000035 (mvBlueFOX3-2024C, DeviceID: '0') Use Update Quick Setup Continuous Acquire Abort Unlock Rec. Prev. Next 0 0 1000

User Experience: Beginner

Hierarchy

- Grid
- Selector
- Display
- Incomp. Monitor
- Analysis
- Sync. AOI
- Wizard
- Find
- Info
- Help

Driver Properties Device Properties

Device	
Setting	Acquisition Settings
Base	Acquisition Setting
BasedOn	Default
Camera	
GenICam	
Device Control	
Image Format Control	
Acquisition Control	
Analog Control	
User Set Control	
GenTL	
ImageProcessing	
ImageDestination	
RequestInfo	
Info	
Statistics	

**System Settings:**  
Settings to control the overall behaviour of the device driver

FPS: 154.8 364.38 MB/s Frames: 40329412 Errors: 0, Timeouts: 0, Aborted: 0, Lost: 0, Incomplete: 0 Image format 1936x1216, RGBx888Packed (OK) Exposure(us): 5000 Gain(dB): 0.0000 (463, 477): 99(R), 83(G), 74(B)

# JARGY CO., LTD.

## Test Report

Model : CBL-USD302MBS-5m  
Camera Brand Name : Matrix Vision

Ver : 1.0

Date : 2015/10/26

### Test Platform

Type	PC		
Model	ASUS Z97-A		
OS	Windows 7 Home Premium 64Bit		
CPU	Intel Core i3-4130		
HDD	SATA III 500GB		
RAM	DDR3 4GB		
USB 3.0	PCH 6 Ports(Intel Z97 Native)		

Tested Camera : mvBlueFOX3-2024C

Tested time : 93h



wxPropView(2.12.4.1600) [FF000035 **mvBlueFOX3-2024C** DeviceID: '0'] (driver version: 2.12.4.1600)

Action Capture Wizards Settings Help

FF000035 (mvBlueFOX3-2024C, DeviceID: '0') Use Update Quick Setup Continuous Acquire Abort Unlock

User Experience: Guru

Driver Properties Device Properties

GenICam	
Device Control	
Image Format C	
Acquisition Cont	
Acquisition M	Continuous
Exposure Mo	Timed
Exposure Tin	10.000
Exposure Au	Off
Trigger Sele	FrameStart
mv Acquisiti	mvDeviceLinkThroughput
mv Acquisiti	Off
Acquisition F	1
mv Acquisiti	Default
mv Acquisiti	55
mv Resulting	164.500
Counter And Ti	
Analog Control	
Gain Selecto	DigitalAll
Black Level S	DigitalAll
Balance Ratio	Red
Balance Whit	Off
mv Logic Gate C	
Chunk Data Con	

**Analog Control:**  
A category that contains the Analog control features.

FPS: 164.4 387.05 MB/s Frames: 54431295 Errors: 0, Timeouts: 0, Aborted: 0, Lost: 0, Incomplete: 0 Image format 1936x1216, RGBx888Packed (OK)

# JARGY CO., LTD.

## Test Report

Model : CBL-USD302MBS-8m  
Camera Brand Name : Matrix Vision

Ver : 1.0

Date : 2015/11/2

### Test Platform

Type	PC		
Model	ASUS Z97-A		
OS	Windows 7 Home Premium 64Bit		
CPU	Intel Core i3-4130		
HDD	SATA III 500GB		
RAM	DDR3 4GB		
USB 3.0	PCH 6 Ports(Intel Z97 Native)		

Tested Camera : mvBlueFOX3-2024C

Tested time : 94h





wxPropView(2.12.4.1600) [FF000035 (mvBlueFOX3-2024C, DeviceID: '0')](driver version: 2.12.4.1600)

Action Capture Wizards Settings Help

FF000035 mvBlueFOX3-2024C, DeviceID: '0' Use Update Quick Setup Continuous Acquire Abort Unlock

User Experience: Guru

Driver Properties Device Properties

[-] GenICam	
[-] Device Control	
[-] Image Format C	
[-] Acquisition Cont	
Acquisition M	Continuous
Exposure Mo	Timed
Exposure Tin	10.000
Exposure Au	Off
[-] Trigger Selec	FrameStart
mv Acquisition	mvDeviceLinkThroughput
mv Acquisition	Off
Acquisition F	1
mv Acquisition	Default
mv Acquisition	55
mv Resulting	154.800
[-] Counter And Ti	
[-] Analog Control	
[-] mv Logic Gate C	
[-] Chunk Data Cor	
[-] File Access Cont	
[-] Digital IO Contro	
[-] Sequencer Cont	
[-] Test Control	

**Balance White Auto:**  
Controls the mode for automatic white balancing between the color channels. The white balancing ratios are automatically adjusted.

FPS: 164.4 | 387.05 MB/s Frames: 55258878 | Errors: 0, Timeouts: 0, Aborted: 0, Lost: 0, Incomplete: 0 | Image format 1936x1216, RGBx888Packed (OK)

# JARGY CO., LTD.

## Test Report

Model : CBL-USD302MBS-10m  
Camera Brand Name : Matrix Vision

Ver : 1.0

Date : 2015/11/5

### Test Platform

Type	NB		
Model	MAC		
OS	Windows 8.1 Pro 64-bit		
CPU	Intel Core i7-3615QM		
HDD	SATA III SSD 128GB		
RAM	DDR3 8GB		
USB 3.0	PCH 2 Ports(Intel Z77 Native)		


Tested Camera : mvBlueFOX3-2024C

Tested time : 72h



wxPropView(2.13.2.1676) [FF000035 (mvBlueFOX3-2024C DeviceID: '0')](driver

Action Capture Wizards Settings Help

FF000035 (mvBlueFOX3-2024C, DeviceID: '0') Use Update Quick Setup Continuous Acquire Abort Unlock

User Experience: Guru

Hierarchy Grid Selector Display Incomp. Monitor Analysis Sync. AOI Wizard Find Info Help About Logs

Driver Properties Device Properties

Device	
Setting	Acquisition Settings
Base	Acquisition Setting
BasedOn	Default
Camera	
GenICam	
Device Control	
Image Format Cont	
Acquisition Control	
Acquisition Mode	Continuous
Exposure Mode	Timed
Exposure Time	10.000
Exposure Auto	Off
Trigger Selector	FrameStart
mv Acquisition F	mvDeviceLinkThroughput
mv Acquisition F	Off
Acquisition Fram	1
mv Acquisition M	Default
mv Acquisition M	55
mv Resulting Fra	164.500
Counter And Timer	
Analog Control	
mv Logic Gate Con	
Chunk Data Contro	
File Access Control	
Digital IO Control	

**Exposure Auto:**  
Sets the automatic exposure mode when ExposureMode is Timed. The exact algorithm used to implement this control is device-specific.

FPS: 164.4 387.05 MB/s Frames: 42154130 Errors: 0, Timeouts: 0, Aborted: 0, Lost: 0, Incomplete: 0 Image format 1936x1216, RGBx888Packed (OK)

# JARGY CO., LTD.

## Test Report

Model : CBL-USD302MBS-12m  
Camera Brand Name : Matrix Vision

Ver : 1.0

Date : 2015/11/16

### Test Platform

Type	PC		
Model	ASUS X99-PRO/USB3.1		
OS	Windows 8.1 Pro 64-bit		
CPU	Intel Haswell-E i7-5960X		
HDD	SATA III 500GB		
RAM	DDR4 8GB		
USB 3.0	PCH 4 Ports(Intel X99 Native)		

Tested Camera : mvBlueFOX3-2024C

Tested time : 90h



wxPropView(2.12.5.1614) [FF000035 (mvBlueFOX3-2024C, DeviceID: '0')](driver versi

Action Capture Wizards Settings Help

FF000035 (mvBlueFOX3-2024C, DeviceID: '0') Use Update Quick Setup Continuous Acquire Abort Unlock

User Experience: Guru

Hierarchy Grid Selector Display Incomp. Monitor Analysis Sync. AOI Wizard Find Info Help About Logs

Driver Properties		Device Properties	
Device			
Setting		Acquisition Settings	
Base		Acquisition Setting	
BasedOn		Default	
Camera			
GenICam			
Device Control			
Image Format Control			
Acquisition Control			
Acquisition Mode		Continuous	
Exposure Mode		Timed	
Exposure Time	10.000		
Exposure Auto		Off	
Trigger Selector		FrameStart	
mv Acquisition Frame R		mvDeviceLinkThroughput	
mv Acquisition Frame R		Off	
Acquisition Frame Coun		1	
mv Acquisition Memory		Default	
mv Acquisition Memory		0	
mv Resulting Frame Rat		164.500	
Counter And Timer Contro			
Analog Control			
mv Logic Gate Control			
Chunk Data Control			
File Access Control			
Digital IO Control			
Sequencer Control			

**Exposure Time:**  
Sets the Exposure time when ExposureMode is Timed and ExposureAuto is Off. This controls the duration where the photosensitive cells are exposed to light.

FPS: 164.0 386.18 MB/s Frames: 52714759 Errors: 0, Timeouts: 0, Aborted: 0, Lost: 0, Incomplete: 0 image format 1936x1216, RGBx888Packed (OK) Exp