

JARGY CO., LTD.

Test Report

Model : CBL-ED302MBCS-10m
Camera Brand Name : Point Grey

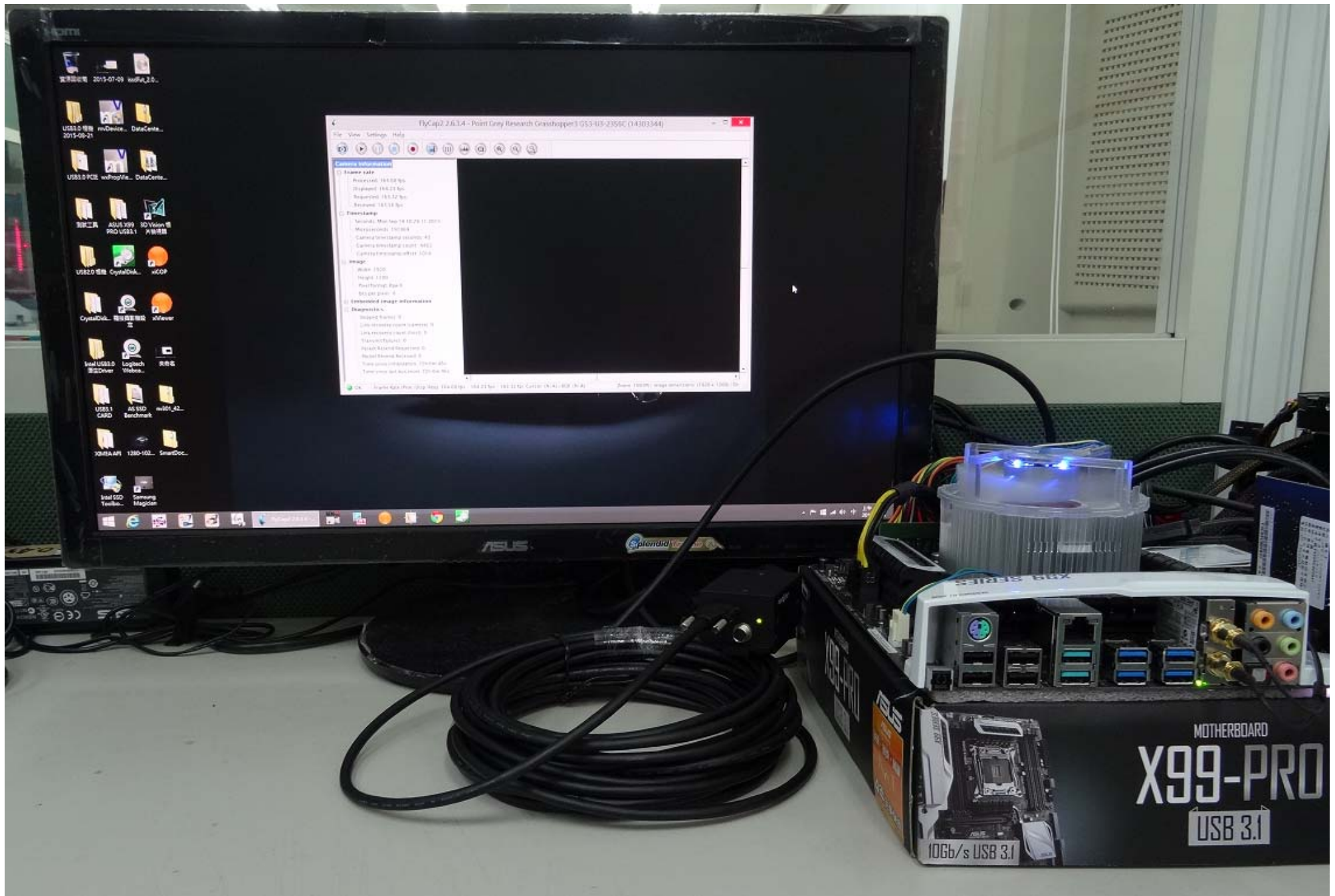
Ver : 1.0

Date : 2015/9/14

Test Platform

Type	PC		
Model	ASUS X99-PRO/USB3.1		
OS	Windows 8.1 Pro 64-bit		
CPU	Intel Haswell-E i7-5960X		
HDD	SATA III 500GB		
RAM	DDR4 8GB		
USB 3.0	PCH 4 Ports(Intel X99 Native)		

Tested Camera : GS3-U3-23S6C-C
Tested time : 72h



FlyCap2 2.0.14 - Point Grey Research Grasshopper3 US3-103-2350C (14303344)

File View Settings Help

Camera Information

- Camera Info
 - Resolution: 1920x96
 - Display: 1920x96
 - Supported: 1920x96
 - Bitstream: 1920x96
- PowerSupply
 - Serial: Mar 16 10:29:11 2015
 - Manufacturer: 102888
 - Camera Model: 102888-02
 - Camera Resolution: 1920x96
 - Camera Frame Rate: 1004
- Image
 - Width: 1920
 - Height: 1080
 - PixelFormat: RGB
 - BitPerPixel: 24
- Embedded Image Information
- Diagnosis

Device Name: 0

Device Vendor: 0

Device Product: 0

Device Serial: 0

Device Model: 0

Device Name: 0

Device Vendor: 0

Device Product: 0

Device Serial: 0

Device Model: 0

ASUS

MOTHERBOARD

X99-PRO

USB 3.1

10Gb/s USB 3.1



Camera Information

Frame rate

... Processed: 163.51 fps
... Displayed: 163.66 fps
... Requested: 163.32 fps
... Received: 163.58 fps

Timestamp

... Seconds: Mon Sep 14 10:28:18 2015
... Microseconds: 2407
... Camera timestamp seconds: 50
... Camera timestamp count: 3347
... Camera timestamp offset: 2288

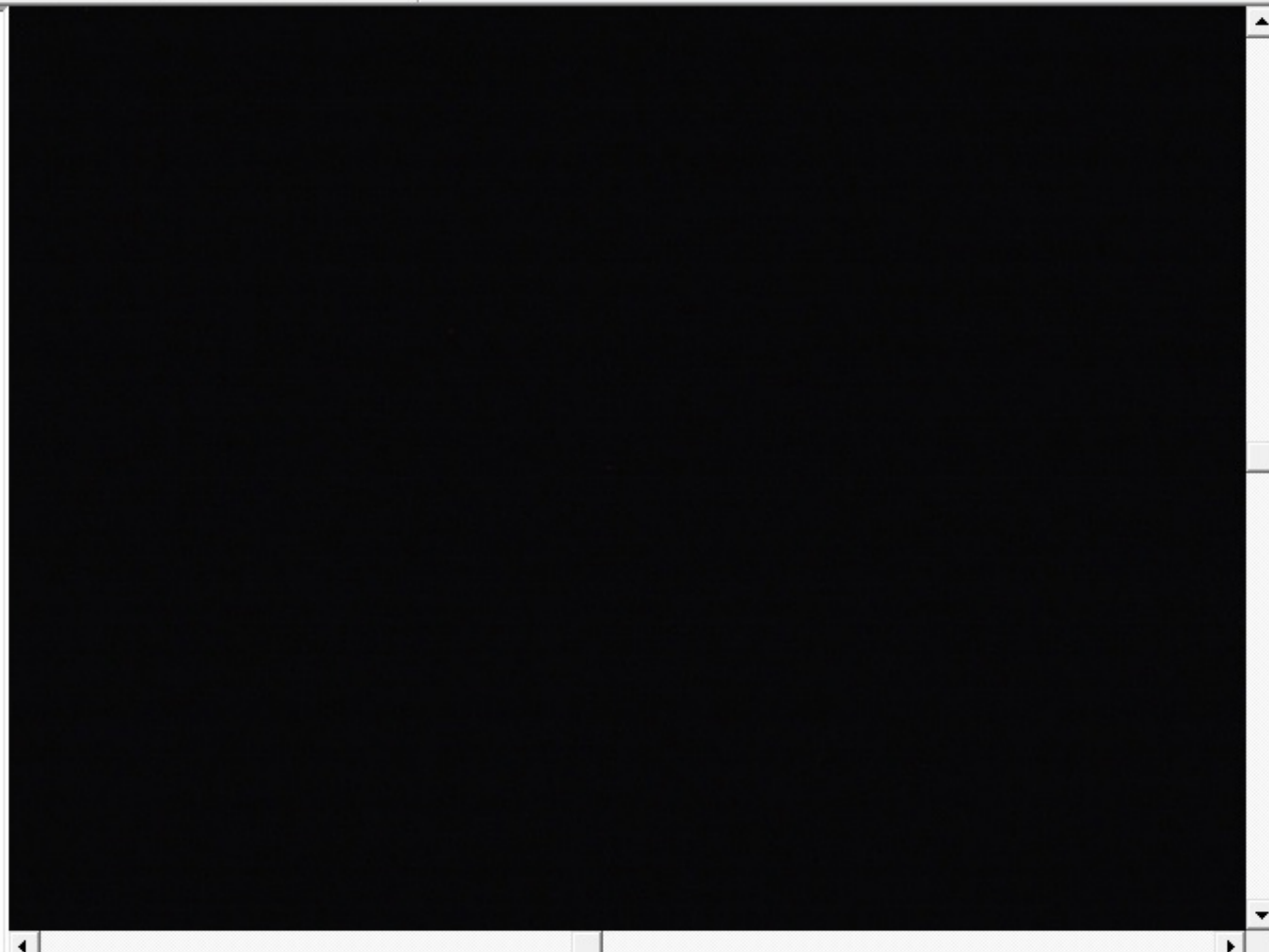
Image

... Width: 1920
... Height: 1200
... Pixel format: Raw 8
... Bits per pixel: 8

Embedded image information

Diagnostics

... Skipped frames: 0
... Link recovery count (camera): 0
... Link recovery count (host): 0
... Transmit failures: 0
... Packet Resend Requested: 0
... Packet Resend Received: 0
... Time since initialization: 72h 0m 53s
... Time since last bus reset: 72h 0m 53s



OK

Frame Rate (Proc/Disp/Req): 164.03 fps / 164.20 fps / 163.32 fps | Cursor: (N/A) | RGB: (N/A)

Zoom: 100.0% | Image dimensions: (1920 x 1200) | Di:

JARGY CO., LTD.

Test Report

Model : CBL-ED302MBCSWB-15m

Ver : 1.0

Date : 2015/9/30

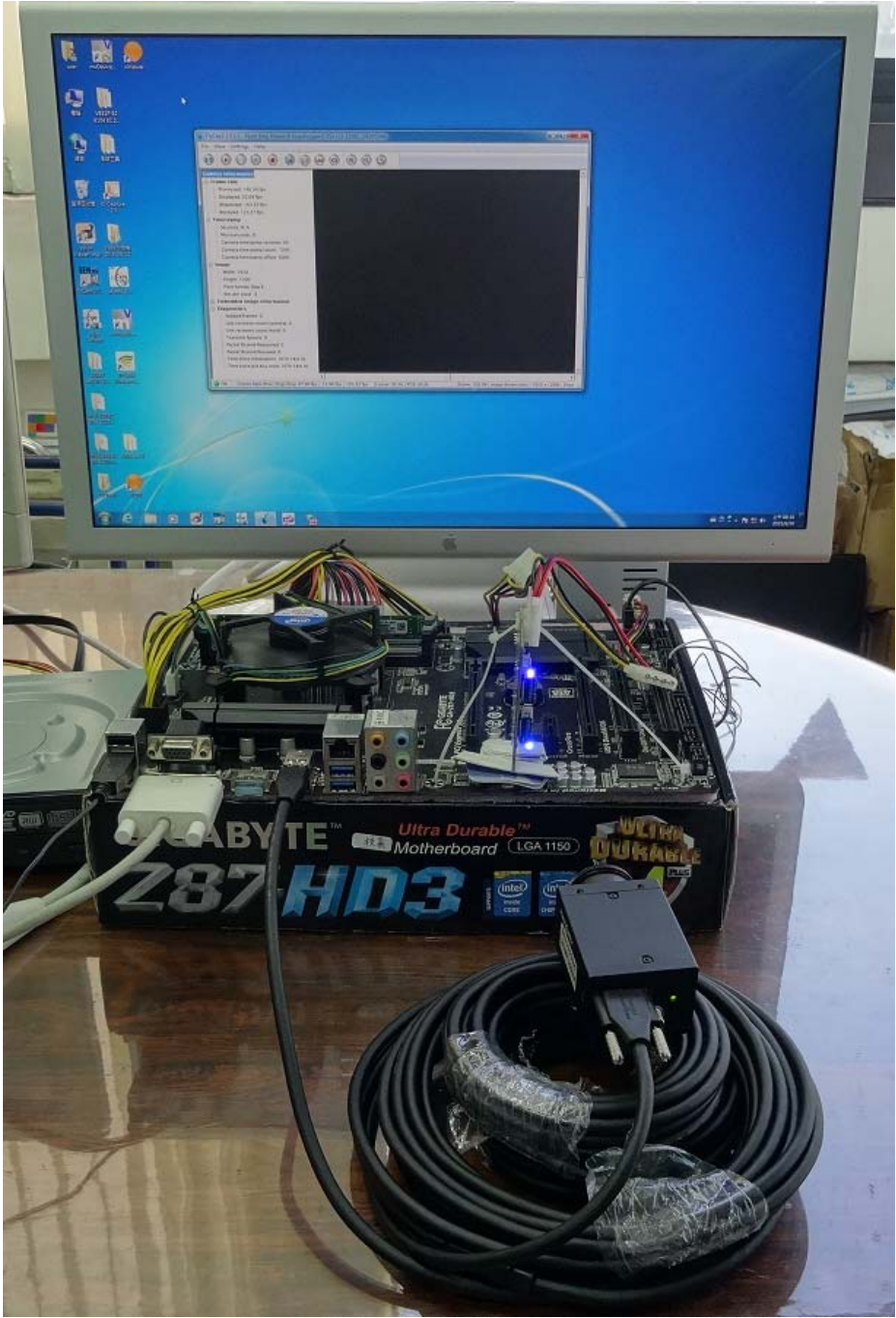
Camera Brand Name : Point Grey

Test Platform

Type	PC		
Model	GIGABYTE Z87-HD3		
OS	Windows 7 Home Premium 64Bit		
CPU	Intel Core i3-4130		
HDD	SATA III 500GB		
RAM	DDR3 4GB		
USB 3.0	PCH 6 Ports(Intel Z87 Native)		

Tested Camera : GS3-U3-23S6C-C

Tested time : 167h



FlyCap2 2.5.1.2 - Point Grey Research Grasshopper3 GS3-U3-23S6C 14303344

File View Settings Help

The image shows the FlyCap2 software interface. The main window is titled 'FlyCap2 2.5.1.2 - Point Grey Research Grasshopper3 GS3-U3-23S6C 14303344'. The interface includes a menu bar (File, View, Settings, Help), a toolbar with various icons, and a large black video preview area on the right. On the left, there is a 'Camera Information' panel with several expandable sections: 'Frame rate', 'Timestamp', 'Image', 'Embedded image information', and 'Diagnostics'. The 'Frame rate' and 'Diagnostics' sections are highlighted with red boxes. The 'Frame rate' section shows: Processed: 102.49 fps, Displayed: 66.33 fps, Requested: 163.32 fps, and Received: 163.62 fps. The 'Diagnostics' section shows: Skipped frames: 0, Link recovery count (camera): 0, Link recovery count (host): 0, Transmit failures: 0, Packet Resend Requested: 0, Packet Resend Received: 0, Time since initialization: 167h 15m 24s, and Time since last bus reset: 167h 15m 24s. At the bottom, there is a status bar with an 'OK' button and a summary of frame rates: 'Frame Rate (Proc/Disp/Req): 105.09 fps / 36.65 fps / 163.32 fps'. Other status information includes 'Cursor: (N/A) | RGB: (N/A)', 'Zoom: 100.0%', and 'Image dimensions: (1920 x 1200) | Displ'.

Camera Information

- Frame rate**
 - Processed: 102.49 fps
 - Displayed: 66.33 fps
 - Requested: 163.32 fps
 - Received: 163.62 fps
- Timestamp**
 - Seconds: N/A
 - Microseconds: 0
 - Camera timestamp seconds: 117
 - Camera timestamp count: 6766
 - Camera timestamp offset: 1135
- Image**
 - Width: 1920
 - Height: 1200
 - Pixel format: Raw 8
 - Bits per pixel: 8
- Embedded image information**
- Diagnostics**
 - Skipped frames: 0
 - Link recovery count (camera): 0
 - Link recovery count (host): 0
 - Transmit failures: 0
 - Packet Resend Requested: 0
 - Packet Resend Received: 0
 - Time since initialization: 167h 15m 24s
 - Time since last bus reset: 167h 15m 24s

OK | Frame Rate (Proc/Disp/Req): 105.09 fps / 36.65 fps / 163.32 fps | Cursor: (N/A) | RGB: (N/A) | Zoom: 100.0% | Image dimensions: (1920 x 1200) | Displ

JARGY CO., LTD.

Test Report

Model : CBL-ED302MBCSWB-20m

Ver : 1.0

Date : 2015/10/5

Camera Brand Name : Point Grey

Test Platform

Type	PC		
Model	ASUS X99-PRO/USB3.1		
OS	Windows 8.1 Pro 64-bit		
CPU	Intel Haswell-E i7-5960X		
HDD	SATA III 500GB		
RAM	DDR4 8GB		
USB 3.0	PCH 4 Ports(Intel X99 Native)		

Tested Camera : GS3-U3-23S6C-C

Tested time : 91h





Camera Information

Frame rate

Processed: 120.50 fps
Displayed: 12.59 fps
Requested: 163.32 fps
Received: 158.10 fps

Timestamp

Seconds: Mon Oct 05 08:17:34 2015
Microseconds: 291660
Camera timestamp seconds: 53
Camera timestamp count: 6964
Camera timestamp offset: 2317

Image

Width: 1920
Height: 1200
Pixel format: Raw 8
Bits per pixel: 8

Embedded image information

Diagnostics

Skipped frames: 0
Link recovery count (camera): 0
Link recovery count (host): 0
Transmit failures: 0
Packet Resend Requested: 0
Packet Resend Received: 0
Time since initialization: 91h 10m 50s
Time since last bus reset: 91h 10m 50s



OK

Frame Rate (Proc/Disp/Req): 150.09 fps / 10.83 fps / 163.32 fps

Cursor: (N/A) | RGB: (N/A)

Zoom: 33.0% | Image dimensions: (1920 x 1200) | Displa